

physio
sensing

Posturography Station



**Advanced
Force Plate for
Balance care.**

**PRECISION.
CONFIDENCE.
STABILITY.**

*Thinking about everyone
in the world who suffers
from balance disorders*

powered by

sensingfu+ure



Posturography Station

PhysioSensing Posturography Station transforms balance assessment into a meaningful experience – combining scientific precision with interactive feedback to evaluate, train, and restore postural stability in patients with vestibular, neurological, or age-related balance disorders, empowering confident movement and measurable recovery.

CLINICAL APPLICATIONS

Vestibular Rehabilitation and Sensory Integration Reweighting

Restore balance by retraining how the brain integrates visual, vestibular, and somatosensory input.

Fall Risk Detection & Prevention

Identify instability before it leads to a fall. Advanced force-plate metrics (sway area, velocity, and trajectory), objectively quantify balance deficits and guide early preventive interventions.

Neurological Recovery & Functional Tracking

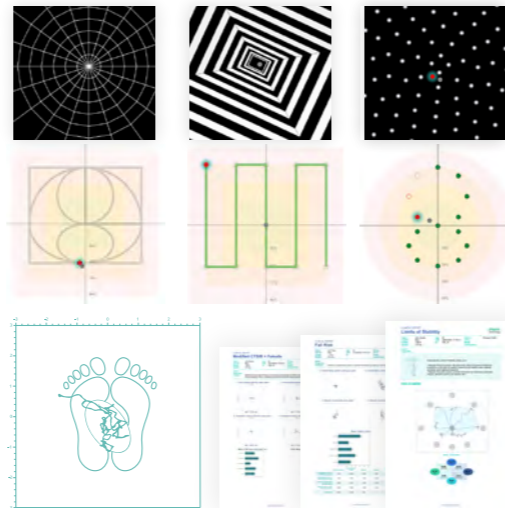
Quantify postural control in patients with Parkinson's disease, stroke, multiple sclerosis, or traumatic brain injury. Monitor recovery and personalize therapy with measurable data that reveal true functional progress.

Limits of Stability (LOS) & Motor Control Training

Assess and expand each patient's safe range of motion using real-time visual feedback. Train automatic postural responses, strengthen control strategies, and restore the ability to move with confidence.

Comprehensive Sensory Organization & Evidence Based Outcome Monitoring

Evaluate the contribution of sensory systems through mCTSIB and related tests. Generate reproducible, comparable reports to track improvement, demonstrate efficacy, and communicate measurable results to patients and referring clinicians.



WHY CHOOSE PHYSIOSENSING POSTUROGRAPHY STATION

Ultra-comprehensive body-sway analytics (30+ parameters)

Deep posturographic detail – over thirty CoP and sway measures to uncover subtle balance deficits others miss.

Objective, data-driven postural assessment

Replace subjective impressions with precise quantification of balance, sway dynamics, and stability in every patient encounter.

Preloaded validated clinical protocols

Comes with ready-to-use standard tests (such as LOS and mCTSIB) to streamline clinical workflow and guarantee reproducibility.

Progress tracking & therapy effectiveness monitoring

Longitudinal reports visually compare sessions to quantify gains, validate treatment, and adapt protocols over time.

Intuitive real-time visual feedback

Patients and clinicians see immediate sway maps or targets, enhancing engagement, motivation, and therapeutic adherence.

Customizable for your clinical needs

Adjust test durations, direction weighting and tailor protocols to each patient's condition and capacity.

Strengthens clinical credibility & differentiation

Offering advanced objective posturography sets your practice apart and inspires confidence among patients and colleagues.

Designed for balance, vestibular & neuro specialists

Tailored interface, metrics, and workflows reflect the needs of physiotherapists, audiologists & ENTs, vestibular therapists, geriatric clinicians, and neurological rehab specialists.

TECHNICAL SPECIFICATIONS

Size (Length x Width x Height)	55 x 55 x 3 cm
Weight	8.5 kg
Thickness	1,5 cm
Material	Aluminium AU4G
Minimum Load	20 kg
Maximum load	250 kg
Sampling rate	100 Hz
Analogic / Digital Conversion	24 bits
Platform computer interface	USB
Power supply	USB cable

PC MINIMUM REQUIREMENTS

Computer	It is mandatory to have the minimum requirements to guarantee proper functioning of the system
Processor (CPU)	Intel i5, 2.30GHz Avoid 'U' or 'G7' versions of processors
RAM	8 GB
Graphic Card	6 GB
USB Ports	Minimum 2 ports - USB 2.0 or 3.0 ports and 1 USB 3.0 port
Operating System	Windows 10 or 11 (64 bits)
Recommended Screen Resolution	1920 x 1080 px

REGULATORY

CE Medical Device Class I

According to Medical Device Regulation (MDR) EU 2017/745 of the European Parliament

Standards applied:
ISO 13 485

UDI - DI number:
0560071927062

Warranty: **2 years**

CONFIGURATIONS

Standalone



Cart



Complete



Product Name:

PhysioSensing Posturography Station

Field of application:

- > Vestibular & Balance Rehabilitation
- > Neurological Rehabilitation
- > Fall Risk Assessment & Prevention
- > Postural Control Research
- > Sports & Performance Stability

Main applications:

- Quantify Balance & Postural Control
- Detect and Prevent Fall Risk
- Guide Vestibular and Neurological Rehabilitation
- Enhance Motor Control and Coordination
- Personalize Therapy with Real-Time Biofeedback
- Monitor Recovery and Demonstrate Outcomes
- Support Evidence-Based Clinical Decision Making
- Increase Patient Engagement and Confidence in Movement

Who is this solution for:

- Vestibular Therapists
- Audiologists & ENTs
- Neurological Rehab Specialists
- Otoneurologists
- Geriatric Clinicians
- Physiotherapists
- Universities and Research Labs

Software Features:

- Balance Assessment Protocols**
 - mCTSIB- Modified Clinical Test of Sensory Interaction on Balance
 - Romberg Test
 - Body Sway (posturography)
 - LOS - Limits of Stability
 - Fall Risk
 - Rhythmic Weight Shift
 - Unilateral Stance
 - Balance Error Scoring System
- Balance Exercise Categories**
 - Balance and Stability
 - Figure and paths
 - Random points
 - Visual stimulus
 - Protocol Training
 - Load charts
- Balance Games**
 - Pong & Ball Balance
 - BART
 - 2D game
 - Slime Pong & Slime Run
 - Space Sway
 - Break your balance
- Motor-Cognitive Game**
 - Memory Game